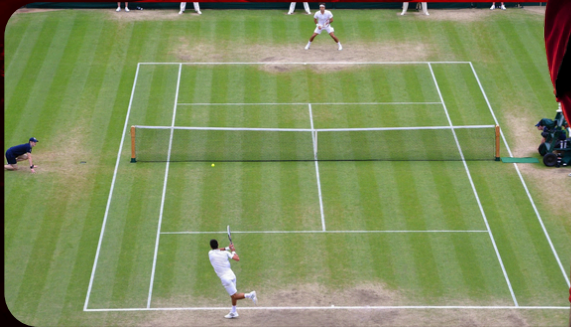




THE INTER COLLEGE SPORTS FEST OF SRI GURU GOBIND SINGH COLLEGE OF COMMERCE

**11-12-13
NOVEMBER**

**Sports
Festival**



ABOUT **SRI GURU GOBIND SINGH COLLEGE OF COMMERCE**

**"A++"
GRADE**

Accredited "A++" Grade by NAAC and has become the first Indian university to receive the U.S.A-India 'Partnership 2020' grant.

**10
ACRES**

State-of-the-art 10-acre campus with great sports faculty.

About

Sri Guru Gobind Singh College of Commerce, is a constituent college of the University of Delhi located in Delhi, India. It was founded in 1984 and is named after the tenth Sikh Guru.

SPORRTIFY'24

SPORRTIFY'24 is one of the most awaited sports events in the Delhi University calendar, where students from top colleges across the university participate, showcasing their skills and competitive spirit in a variety of sports.

We expect a footfall of over 1,000 participants and spectators during the event, making it a great platform for sponsors to gain visibility.



PRIZE MONEY

TOTAL PRIZE POOL

Rs. 1 Lakh+

SPORTS	1ST	2ND	REGISTRATION FEES(per person)
ATHLETICS (BOYS)	Rs. 2000	Rs. 1000	Rs. 150
ATHLETICS (GIRLS)	Rs. 2000	Rs. 1000	Rs. 150
BASKETBALL (BOYS)	Rs. 5000	Rs. 3000	Rs. 150
BASKETBALL (GIRLS)	RS. 3000	RS. 2000	RS. 150
CHESS (BOYS)	Rs. 3000	Rs. 2000	Rs. 150
CHESS (GIRLS)	Rs. 3000	Rs. 2000	Rs. 150
CRICKET (BOYS)	Rs. 10000	Rs. 5000	Rs. 150
FOOTBALL (BOYS)	Rs. 10000	Rs. 5000	Rs. 150
FOOTBALL(GIRLS)	Rs. 5000	Rs. 3000	Rs. 150
LAWNTENNIS(BOYS)	Rs. 3000	Rs. 2000	Rs. 150
SHOOTING (BOYS)	Rs. 3000	Rs. 2000	Rs. 150
SHOOTING (GIRLS)	Rs. 3000	Rs. 2000	Rs. 150
TABLE TENNIS(BOYS)	Rs. 3000	Rs. 2000	Rs. 150
VOLLEYBALL (BOYS)	RS. 3000	RS. 2000	RS. 150
VOLLEYBALL(GIRLS)	Rs. 3000	Rs. 2000	Rs. 150

ATHLETICS

Men

WINNER

Rs. 2000

RUNNER UP

Rs. 1000

LIST OF EVENTS

Men

- *Track – 100m, 400m,*
- *Standard rules will be followed, winners will be decided by heats and finals*



ATHLETICS

Women

WINNER

Rs. 2000

RUNNER UP

Rs. 1000

LIST OF EVENTS

Men

- *Track – 100m, 400m,*
- *Standard rules will be followed, winners will be decided by heats and finals*



BASKETBALL

Men

WINNER

Rs. 3000

RUNNER UP

Rs. 2000

PLAYER LIMIT

MEN: MIN-8, MAX-12

FORMAT

- **Each quarter will be of 7 minutes with a 2 minutes break between them, and a 5 minute break at half time.**
- **If the score is tied at the end of the fourth period, the game shall continue with as many extra periods of 5 minutes as necessary to break the tie.**



BASKETBALL

Women

WINNER

Rs. 3000

RUNNER UP

Rs. 2000

PLAYER LIMIT

WOMEN: MIN-6, MAX-12

FORMAT

- **Each quarter will be of 5 minutes with a 2 minutes break between them, and a 5 minute break at half time.**
- **If the score is tied at the end of the fourth period, the game shall continue with as many extra periods of 5 minutes as necessary to break the tie.**



CHESS

Men

WINNER

Rs. 3000

RUNNER UP

Rs. 2000

PLAYER LIMIT

MIN: 4

MAX: 5

FORMAT

- **Each team will consist of a maximum of 5 players (4 players and 1 reserve).**
- **The format will be 4 vs 4.**
- **Time control: 15 minutes per player, with a 10-second increment per move.**



CHESS

Women

WINNER

Rs. 3000

RUNNER UP

Rs. 2000

PLAYER LIMIT

MIN: 4

MAX: 5

FORMAT

- **Each team will consist of a maximum of 5 players (4 players and 1 reserve).**
- **The format will be 4 vs 4.**
- **Time control: 15 minutes per player, with a 10-second increment per move.**



CRICKET

Men

WINNER

Rs. 10000

RUNNER UP

Rs. 5000

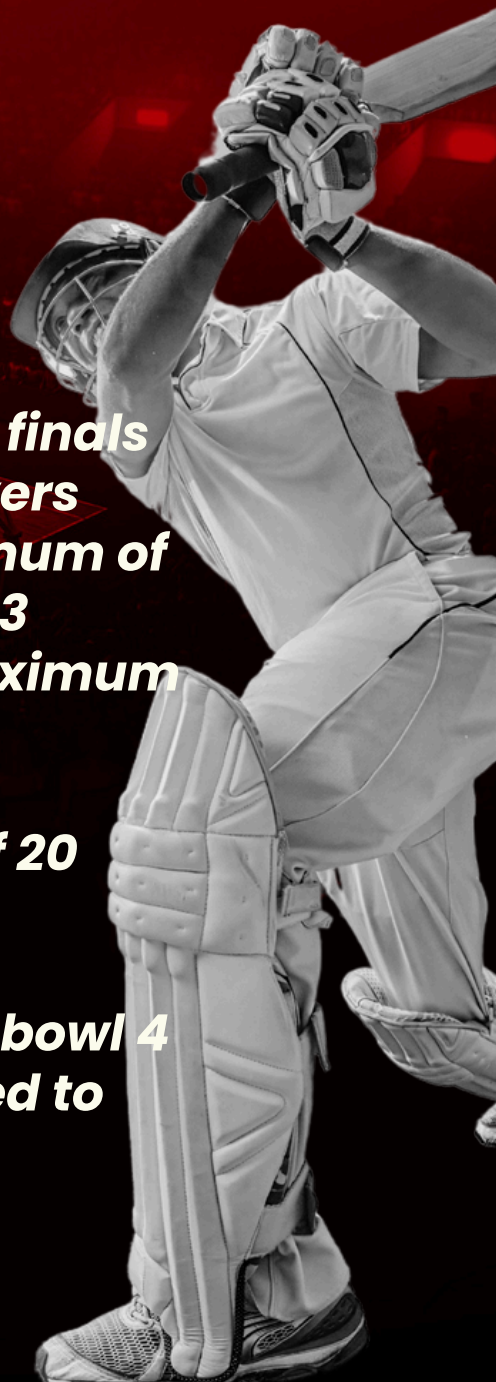
PLAYER LIMIT

MIN: 13

MAX: 15

FORMAT

- **All matches except semifinals and finals will be 15 overs each, with first 4 overs designated as powerplay. A maximum of 3 bowlers are allowed to bowl only 3 overs and others are allowed a maximum of 2 overs.**
- **Semifinals and finals will consist of 20 overs each, with the first 5 overs designated as the powerplay. A maximum of 1 bowler is allowed to bowl 4 overs and other bowlers are allowed to bowl only 3 overs**



FOOTBALL

Men

WINNER

Rs. 10000

RUNNER UP

Rs. 5000

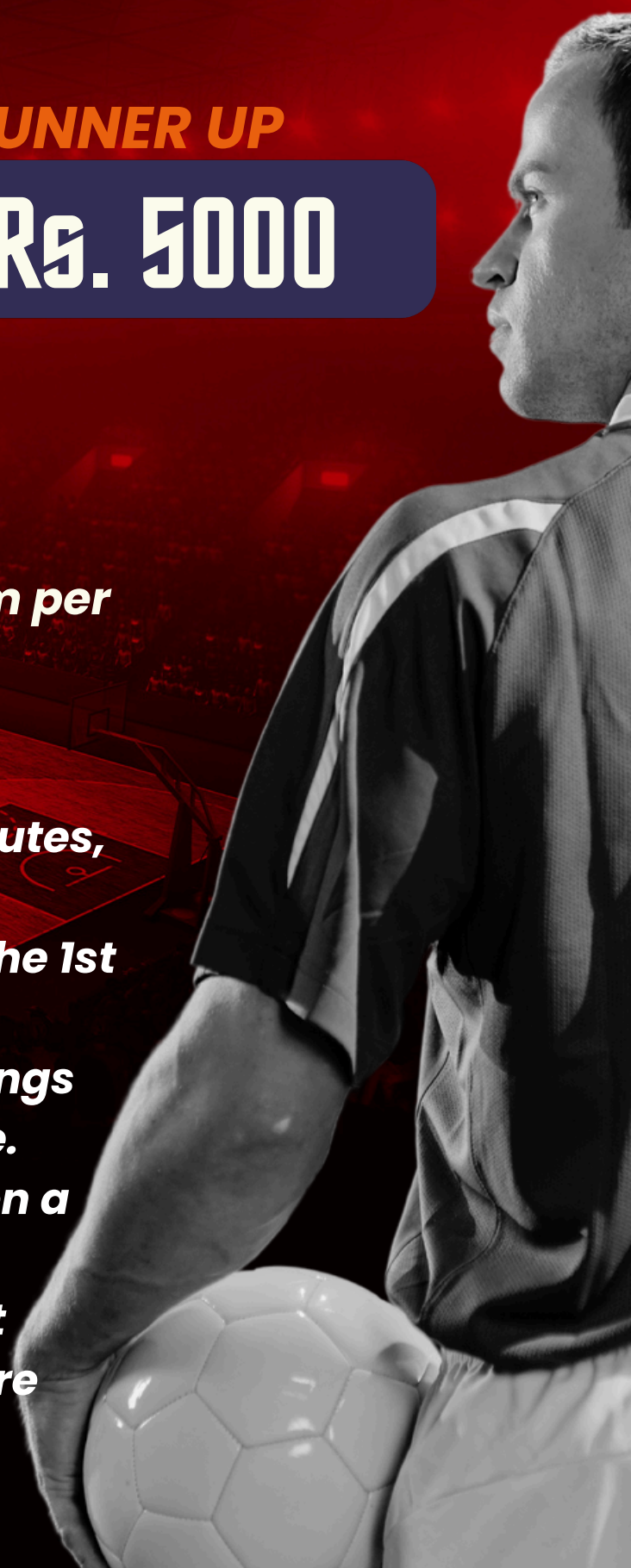
PLAYER LIMIT

MIN-14, MAX-16

Max 5 field subs per team per match

FORMAT

- **Group stage - 40 minutes, 20 minutes per half, 7 minutes break after the 1st half.**
- **Knockout match timings are subject to change.**
- **In case a team is given a walkover they are awarded a win in that match with a 3-0 score line**



FOOTBALL

Women

WINNER

Rs. 5000

RUNNER UP

Rs. 3000

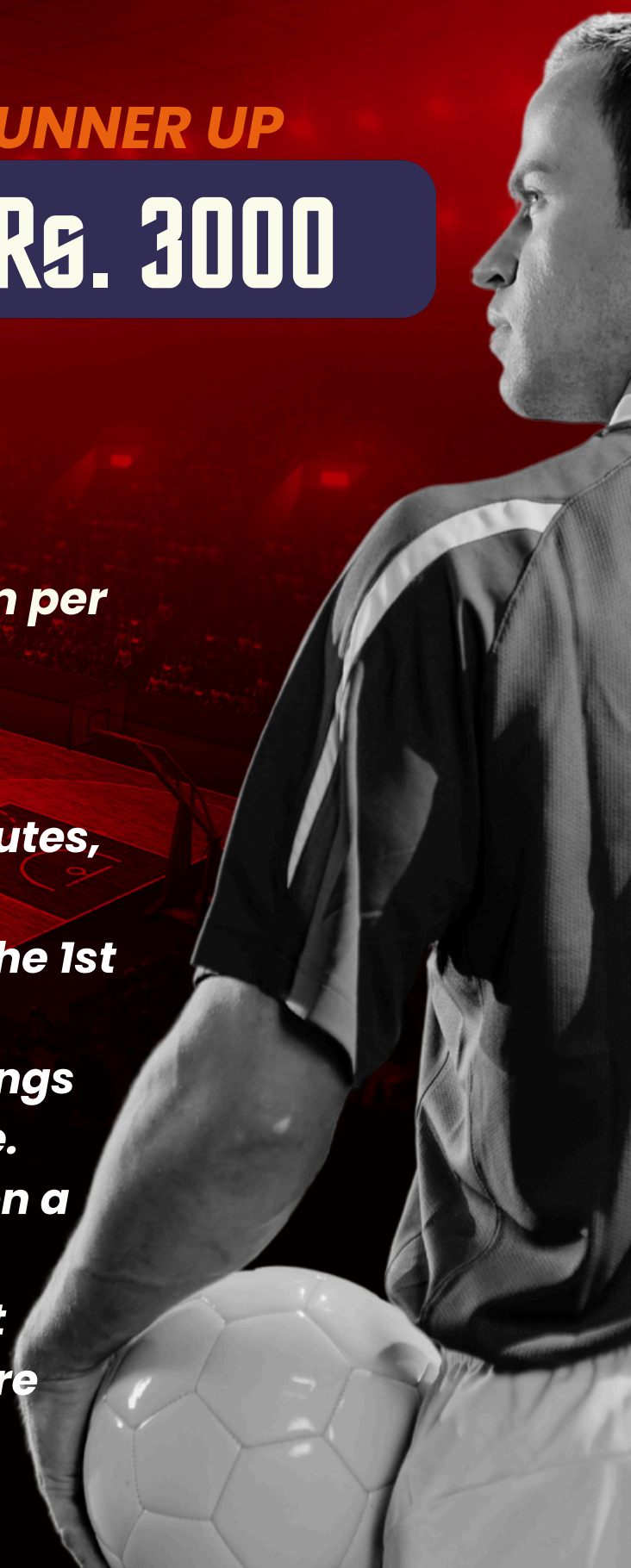
PLAYER LIMIT

MIN-6, MAX-8

Max 2 field subs per team per match

FORMAT

- **Group stage - 20 minutes, 10 minutes per half, 5 minutes break after the 1st half.**
- **Knockout match timings are subject to change.**
- **In case a team is given a walkover they are awarded a win in that match with a 3-0 score line**



LAWN TENNIS

Men

WINNER

Rs. 3000

RUNNER UP

Rs. 2000

PLAYER LIMIT

MEN: MIN-3, MAX-4

FORMAT

- **Total Matches per Round: 3 (2 singles, 1 doubles).**
- **The team that wins 2 out of 3 matches wins the round.**
- **Singles: Two players from each team compete in individual matches.**
- **Doubles: One match with a pair from each team.**



VOLLEYBALL

Men

WINNER

Rs. 3000

RUNNER UP

Rs. 2000

PLAYER LIMIT

MEN: MIN-6, MAX-8

FORMAT

- All matches will be of 3 sets. In the case of a 1-1 tie, the deciding 3rd set is played to 15 points.
- The semi-finals and final will be of 5 sets. In the case of a 2-2 tie, the deciding 5th set is played to 15 points. The rest of the sets would be of 25 points each.



VOLLEYBALL

Women

WINNER

Rs. 3000

RUNNER UP

Rs. 2000

PLAYER LIMIT

WOMEN: MIN-6, MAX-8

FORMAT

- All matches will be of 3 sets. In the case of a 1-1 tie, the deciding 3rd set is played to 15 points.
- The semi-finals and final will be of 5 sets. In the case of a 2-2 tie, the deciding 5th set is played to 15 points. The rest of the sets would be of 25 points each.



SHOOTING

Men and Women

WINNER

Rs. 3000

RUNNER UP

Rs. 2000

PLAYER LIMIT

Individual Competition

FORMAT

- **Events: 10 m air Pistol and Rifle shooting**
- **Total match shots:40**
- **Duration: 15 min sighting time followed by 1hr match time.**
- **Participants to bring their personal weapon, only match cards and pressure will be provided by us.**
- **No Finals to be conducted, results will be announced on the basis of Qualification Round.**

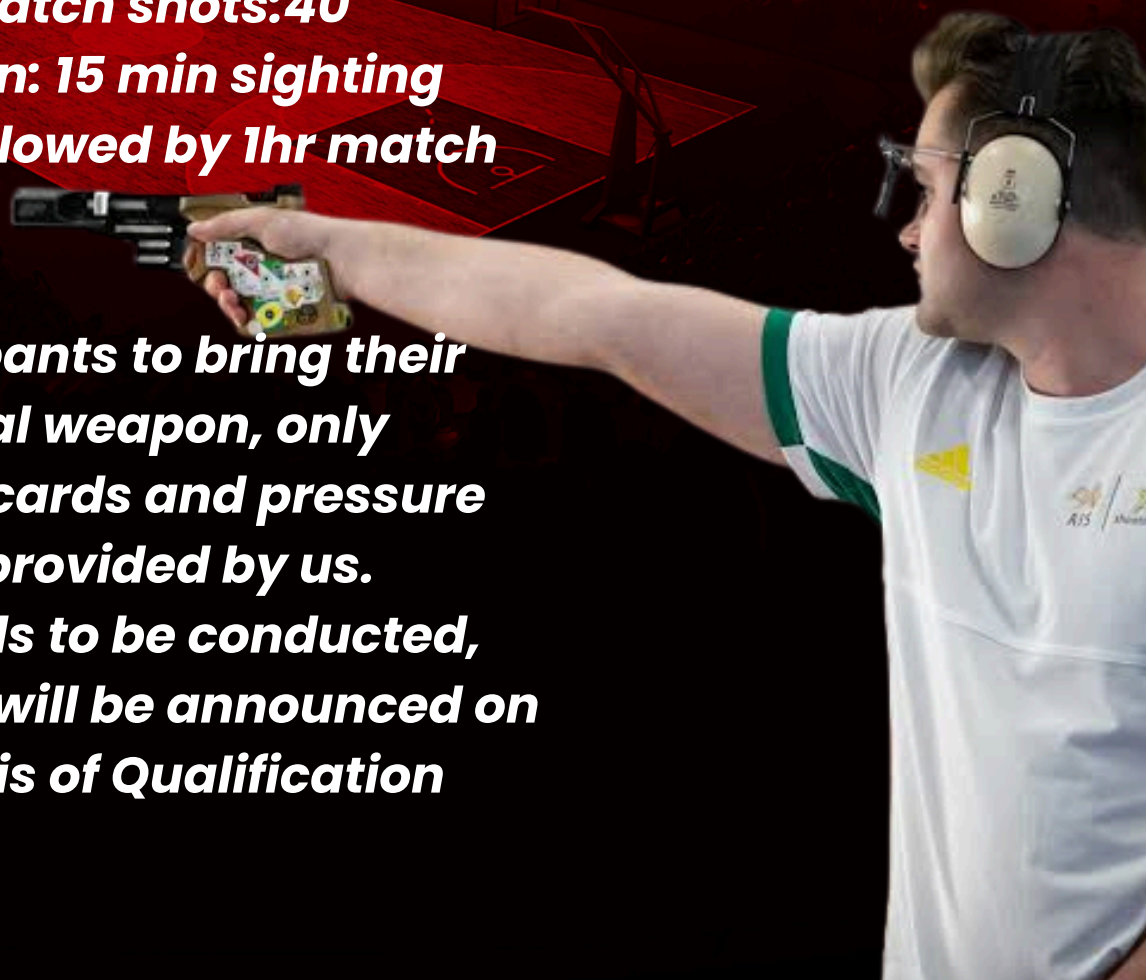


TABLE TENNIS

Men

WINNER

Rs. 3000

RUNNER UP

Rs. 2000

PLAYER LIMIT

Single Entry

FORMAT

- **Only single entries are allowed.**
- **The first player/team to reach 11 points with a 2-point lead wins the game. Matches are played as a best of 3 games.**
- **Points are awarded for illegal returns, hitting the net, hitting off the table, or missing the ball.**



HOW TO REGISTER?

RULEBOOK

https://docs.google.com/document/d/1jenlviKNd_r78EFNBapNU9jVAZD2aGMD1nQtf5b0mCA/edit?usp=sharing

REGISTER HERE

FOR TEAM SPORTS:

<https://forms.gle/qWdUHZGsZ78G7ozw9>

FOR INDIVIDUAL SPORTS:

<https://forms.gle/4yAj7MrjWmyGKrmT9>

PAYMENT DETAILS



Name: SRI GURU GOBIND SINGH COLLEGE OF COMMERCE

A/c No.: 08941090005001

IFS Code: PSIB0000894

Bank Name: PUNJAB AND SIND BANK

PAN No.: AADTS0797D

GSTIN: 07AADTS0797D1ZB

Contact the Team

Jujhar Singh

President

+91 99110 58880

Sumit Gianey

Sports Secretary

+91 9599151681

Abhiraj Tomar

Vice President

+91 91198 03805

Aryan Mullick

Joint Secretary

+91 83758 89155

Ishita Anand

Treasurer

+91 84928 52251

Angad Sethi

Strategy Head

+91 95825 14363

Ankit Tomar

Operations Director

+91 82728 20968