

SRI GURU GOBIND SINGH COLLEGE OF COMMERCE

University of Delhi, Pitampura (Opposite TV Tower)

Delhi – 110034

REQUEST FOR QUOTATION (RFQ)

Limited Quotation Enquiry — Item-Rate Basis

(Two-Cover System: Technical & Financial)

RFQ FOR SUPPLY, INSTALLATION, TESTING AND COMMISSIONING OF UPS DISTRIBUTION PANEL AND ASSOCIATED CABLING FOR 40 kVA UPS

RFQ / Tender Notice No.	SGGSCC/Admin/PO/7454 Dt:19.06.2026_____
Type of Procurement	Limited Quotation Enquiry — Item-Rate, Two-Cover System
Owner	Principal, Sri Guru Gobind Singh College of Commerce
Address	University of Delhi, Pitampura (Opposite TV Tower), Delhi – 110034
Website	www.sggsc.ac.in
Date of Issue / Start of Download	19.06.2026
Last Date & Time for Submission	29.06.2026 by 11:30 a.m.
Date & Time of Opening (Technical)	29.06.2026 at 12:00 p.m.
Earnest Money Deposit (EMD)	Nil
Cost of RFQ Document	Nil
Validity of Offer	90 days from date of opening
Estimate Cost	Rs. 2.50 Lakh

Issued by:

Principal, Sri Guru Gobind Singh College of Commerce

University of Delhi, Pitampura (Opposite TV Tower), Delhi – 110034

Email: principaloffice@sggsc.ac.in | Website: www.sggsc.ac.in

CONTENTS

CONTENTS.....	2
NOTICE INVITING QUOTATION	3
INSTRUCTIONS TO BIDDERS	4
SCOPE OF WORK & TECHNICAL REQUIREMENTS	6
SCHEDULE OF ITEMS (BILL OF QUANTITIES)	7
CHECKLIST OF DOCUMENTS FOR THE TECHNICAL BID (COVER-1).....	11
TENDER ACCEPTANCE (OFFER) LETTER.....	12
BIDDER’S DETAILS	13
CONDITIONS OF CONTRACT	14
FORM OF PERFORMANCE SECURITY (BANK GUARANTEE) BOND	17
CONTRACT DRAWINGS	19

NOTICE INVITING QUOTATION

To,

All Eligible Bidders / Vendors

Dear Sir / Madam,

Sealed quotations are invited on behalf of the **Principal, Sri Guru Gobind Singh College of Commerce** from eligible and experienced electrical contractors/vendors for the **supply, installation, testing and commissioning of a UPS Distribution Panel and associated cabling for the installed 40 kVA UPS.**

The 40 kVA Legrand HPi 33 EVO UPS has already been supplied. This RFQ covers the AC UPS Distribution Panel, mains feed cabling, outgoing feeder cabling, cable tray, glands, lugs, earthing, testing and commissioning, complete as specified in the Bill of Quantities and Single Line Diagram.

This is an item-rate, limited quotation enquiry. Rates shall be firm and inclusive of all materials, labour, tools, transport, duties, statutory compliance and incidental costs, except GST, which shall be quoted separately. Payment shall be based on actual measurements at site at the quoted unit rates.

Bids shall be submitted under the **Two-Cover System**: Cover-1 for the Technical Bid and Cover-2 for the Financial Bid. Sealed quotations must reach the Principal's office by **29.06.2026, 11:30 a.m.** Technical Bids will be opened on **29.06.2026, 12:00p.m.** in the presence of bidders or authorised representatives who choose to attend.

The RFQ document may be downloaded free of cost from the College website. No document fee or Earnest Money Deposit is required.

The Owner reserves the right to accept or reject any quotation, in whole or in part, and may split the work between Part 1 (Panel) and Part 2 (Cabling), without assigning reasons.

Sd/-

Principal, Sri Guru Gobind Singh College of Commerce

INSTRUCTIONS TO BIDDERS

A. General

1. The bidder shall quote firm unit rates against each item of the Schedule of Items (Bill of Quantities). Rates shall be written both in figures and, for the totals, in words. In case of any discrepancy between figures and words, the rate written in words shall govern.
2. This is an item-rate contract. The quantities given in the Schedule of Items are provisional and are stated only to provide a common basis for comparison of quotations. Payment shall be made for the actual quantity of work executed and measured at site, at the quoted unit rates. The Owner reserves the right to increase, decrease or omit any quantity or item without any change in the quoted unit rates.
3. The rates quoted shall be deemed to include the cost of all materials, labour, tools and plant, transport, loading, unloading, cartage, wastage, samples, testing, statutory compliance and all incidental works necessary for completion of the item in all respects, whether or not specifically mentioned, except Goods and Services Tax (GST).
4. All rates shall be exclusive of GST. GST shall be shown separately in the Financial Bid and shall be paid extra at the applicable rate against a proper tax invoice.

B. Submission — Two-Cover System

Bids shall be submitted in two sealed covers placed inside one sealed outer envelope, superscribed with the RFQ title and “DO NOT OPEN BEFORE 29.06.2026, 11:30 hrs”.

- **Cover-1 — Technical Bid:** all documents listed in the Technical Bid Checklist, the signed Tender Acceptance Letter, Bidder’s Details, and the Schedule of Items with the Rate and Amount columns left blank (un-priced copy) as proof of scope, duly signed and stamped on each page.
- **Cover-2 — Financial Bid:** the priced Schedule of Items (Bill of Quantities) with unit rates and amounts filled in, duly signed and stamped, together with the priced summary and GST.

C. Eligibility

5. The bidder shall be a registered electrical contractor / firm with a valid electrical licence (where applicable) and shall enclose proof of registration, PAN and GST registration.
6. The bidder shall have satisfactorily executed similar electrical / LT panel and cabling works. Proof by way of work orders and / or completion certificates shall be enclosed.
7. The bidder shall offer materials only of the makes listed against each item in the Schedule of Items. Where more than one make is listed, the bidder shall offer any one of the listed makes. Any equivalent make shall be offered only with prior written approval of the Owner / Architect.

D. Validity, Award and Security

8. Quotations shall remain valid for acceptance for a period of 90 (ninety) days from the date of opening of the Technical Bid.

9. The Owner is not bound to accept the lowest or any quotation and may accept the whole or any part of a quotation, or split the award between Part 1 (Panel) and Part 2 (Cabling), without assigning any reason.
10. The successful bidder shall, before commencement of work, furnish a Performance Guarantee in the form of a Bank Guarantee equal to five percent (5%) of the accepted value of the work, in the format enclosed, valid throughout the Defects Liability Period plus a claim period as specified in the General Conditions.

E. Site Verification before Manufacture

11. Before manufacture of the panel and before ordering cables, the successful bidder shall: (a) confirm the actual route lengths of all cable runs at site; (b) confirm the prospective fault level at the source feeding the UPS input so as to fix the breaking capacity of the MCCBs (the Schedule assumes a breaking capacity of 36 kA, to be confirmed); and (c) submit the panel General Arrangement drawing, Single Line Diagram, Guaranteed Technical Particulars, make list and a valid CPRI type-test certificate for the panel, for approval of the Owner / Architect.
12. No claim for variation in the quoted unit rates shall arise on account of such confirmation. Variation in quantity (for example cable length) shall be paid only at the quoted unit rates on the basis of actual measurement at site.

SCOPE OF WORK & TECHNICAL REQUIREMENTS

Scope

The installed 40 kVA Legrand HPi 33 EVO UPS includes input, output and maintenance bypass switches and an integrated isolation transformer; therefore, no external bypass is required. The required panel shall provide incoming protection, metering, surge protection and outgoing distribution.

The work comprises:

- **Part 1:** UPS Distribution Panel — supply, installation, testing and commissioning.
- **Part 2:** Cable works — mains feed from Ground Floor main panel to 2nd Floor UPS panel, outgoing feeders to Computer Lab and Library, cable tray, glands, lugs and earthing.

Key Technical Particulars

- Panel: indoor, floor-mounted, cubicle type, 14 SWG CRCA, powder-coated, IP 42, double door, full-height cable alley, removable bottom gland plate.
- Design and type-test: IS / IEC 61439-1 & 2, Form 2b, with valid CPRI type-test certificate.
- Busbar: 160 A TPN aluminium, R-Y-B-N, sleeved and colour-coded, full neutral; earth bus provided.
- Incomer 100 A 4P MCCB ($I_{cu} = I_{cs} = 36$ kA, to be confirmed); outgoing 63 A 4P MCCB (Computer Lab), 32 A 4P MCB (Library) and 32 A 4P MCB (spare).
- Metering by multifunction meter with 3 nos CT 100/5 A; R-Y-B indication; Type 2 SPD (In 20 kA) on panel input.
- Cables: 1.1 kV grade XLPE armoured to IS 7098 Part 1 — 50 sq mm 4C aluminium (mains feed, Run 1), 16 sq mm 4C copper (Computer Lab, Run 2a) and 6 sq mm 4C copper (Library, Run 2b). Cable sizes are not interchangeable between aluminium and copper.
- Earthing: panel body and earth bus connected to the building TN-S earth grid via 25 x 6 mm Cu / GI strip.

Important: The Single Line Diagram and Schedule of Items shall be read together. The successful bidder must confirm cable route lengths, source fault level and MCCB breaking capacity before manufacture or ordering.

SCHEDULE OF ITEMS (BILL OF QUANTITIES)

Bidders shall fill in the Rate and Amount columns. Rates exclusive of GST. Quantities are provisional; payment on actual measurement at quoted unit rates.

S. No.	Item Description	Make	Qty	Unit	Rate (Rs.)	Amount (Rs.)
PART 1 — UPS DISTRIBUTION PANEL						
(A) Supply of UPS Distribution Panel						
1	Supply of indoor, floor-mounted, cubicle type UPS Distribution Panel for the installed 40 kVA Legrand HPi 33 EVO UPS, 14 SWG CRCA, powder-coated, IP 42, double door, full-height cable alley, removable bottom gland plate, designed and type-tested to IS / IEC 61439-1 & 2, Form 2b, with valid CPRI certificate, complete with components at 1.1 to 1.10, busbar, neutral and earth bus, internal wiring, labels and earthing.	Refer 1.1–1.10	1	Set		
1.1	Incomer: 100 A, 4 Pole MCCB, Icu = Ics = 36 kA at 415 V, rotary handle, terminal spreaders.	ABB / L&T / Schneider / Siemens	1	No.		
1.2	TPN busbar 160 A aluminium with phase / neutral / earth bus, sleeved and colour-coded; bus links.	Asian / reputed	1	Set		
1.3	Outgoing-1 (Computer Lab): 63 A, 4 Pole MCCB, Icu = Ics = 36 kA, rotary handle, spreaders.	ABB / L&T / Schneider / Siemens	1	No.		
1.4	Outgoing-2 (Library): 32 A, 4 Pole MCB, C-curve, 10 kA.	ABB / L&T / Schneider / Siemens	1	No.		
1.5	Outgoing-3 (Spare): 32 A, 4 Pole MCB, C-curve, 10 kA.	ABB / L&T / Schneider / Siemens	1	No.		
1.6	Metering: Multifunction meter (MFM), LCD, RS-485 Modbus, with 3 nos CT 100/5 A, Class 1.	Schneider / L&T / Conzerv	1	Set		
1.7	Indication: R-Y-B LED phase lamps with control MCB; ON / OFF / TRIP for incomer.	ABB / reputed	1	Set		
1.8	Control supply protection: 6 A SP MCB, C-curve, 10 kA, 3 nos.	ABB / L&T / Schneider	3	No.		
1.9	Type 2 SPD, 3-phase + N, In 20 kA, Up below 1.5 kV, on panel input with disconnecting MCB.	ABB / Schneider / OBO	1	Set		
1.10	Panel enclosure: 14 SWG CRCA cubicle, powder-coated, IP 42, gland plate, busbar chamber, cable alley, earthing studs, internal wiring and labels.	Asian / Adlec / reputed	1	No.		
Sub-total Item 1 (Panel):						

S. No.	Item Description	Make	Qty	Unit	Rate (Rs.)	Amount (Rs.)
(B) Panel Installation, Testing and Commissioning						
2	Installation of UPS Distribution Panel including positioning on base channel, levelling, fixing and connection of incoming / outgoing cables.	—	1	Job		
3	Testing and commissioning of panel — IR test, continuity, phase sequence, MFM / CT check, breaker operation, pre-energisation checks per IS / IEC 61439, with test report.	—	1	Job		
4	Earthing connection of panel body and earth bus to building earth grid (25 x 6 mm Cu / GI strip under separate item; this covers connection and lugs at panel).	—	1	Job		
5	Freight, loading, unloading and local cartage of panel to site (Delhi local).	—	1	L/S		
Sub-total Items 2 to 5 (Panel installation):						
TOTAL PART 1 (Panel, excl. GST):						
PART 2 — CABLE WORK						
(C) Cable Supply (three separate runs — see Cable Sizing note)						
6	Supply of 50 sq mm x 4 Core Aluminium Conductor Armoured LT Cable, 1.1 kV grade, XLPE, IS 7098 Part 1, for MAINS FEED from Ground Floor Main Panel to 2nd Floor UPS Panel. (Run 1, 70 A.) Length 50 m + 10% wastage = 55 m.	Polycab / KEI / Havells	55	Mtr		
7	Supply of 16 sq mm x 4 Core Copper Conductor Armoured LT Cable, 1.1 kV grade, XLPE, IS 7098 Part 1, for COMPUTER LAB feeder from UPS Panel. (Run 2a, 46 A.) Length 15 m + 10% = 17 m. Confirm route length.	Polycab / KEI / Havells	17	Mtr		
8	Supply of 6 sq mm x 4 Core Copper Conductor Armoured LT Cable, 1.1 kV grade, XLPE, IS 7098 Part 1, for LIBRARY feeder from UPS Panel. (Run 2b, 16 A.) Length 20 m + 10% = 22 m. Confirm route length.	Polycab / KEI / Havells	22	Mtr		
(D) Cable Tray, Glands and Terminations						
9	Supply and installation of MS perforated powder-coated cable tray 150 x 50 x 1.6 mm for the mains feed riser (Run 1), with suspenders, supports, fasteners and earthing.	Asian / reputed	50	Mtr		
10	Supply of DC brass compression glands: 50 mm for 50 sq mm Al cable (2 nos); 28 mm for 16 sq mm Cu cable (2 nos); 25 mm for 6 sq mm Cu cable (2 nos). Total 6 nos.	Comet / Dowells / ECS	6	No.		

S. No.	Item Description	Make	Qty	Unit	Rate (Rs.)	Amount (Rs.)
11	Supply and crimping of cable lugs (bimetallic for Al, copper for Cu) at all cable ends, with heat-shrink sleeving and ferrules.	Dowells / reputed	3	Job		
(E) Cable Laying and Allied						
12	Charges for laying of 50 sq mm Al mains cable on tray / in conduit including clamping at 1.0 m, ferrules and dressing (Run 1).	—	55	Mtr		
13	Charges for laying of 16 sq mm and 6 sq mm Cu feeder cables on tray / in conduit including clamping, ferrules and dressing (Runs 2a + 2b).	—	39	Mtr		
14	Charges for glanding at each cable end (6 ends total) including dressing and gland tightening to torque.	—	6	Job		
15	Charges for core cutting through wall / floor slab for cable crossing (GF to 2nd floor riser), making good after laying.	—	2	Job		
16	Supply of 25 x 6 mm copper earth strip for panel-to-grid earth connection.	reputed	50	Mtr		
TOTAL PART 2 (Cables, excl. GST):						

Summary

Part 1 — UPS Distribution Panel (excl. GST)	Rs.
Part 2 — Cable Work (excl. GST)	Rs.
Total (Part 1 + Part 2, excl. GST)	Rs.
Add: GST @ 18%	Rs.
Grand Total (incl. GST)	Rs.

Note on Cable Sizing — Three Separate Runs

The mains feed, Computer Lab feeder and Library feeder carry different loads and are protected by separate breakers. They therefore require separate cable sizes. Aluminium and copper cables of the same nominal size are not interchangeable.

- Run 1 (mains): 50 sq mm x 4C aluminium, approx 50 m. Voltage drop within the 5% limit (NEC India SP 30:2023, Table 5); ampacity with margin against the 70 A demand. Aluminium selected by the College.
- Run 2a (Computer Lab): 16 sq mm x 4C copper. Run 2b (Library): 6 sq mm x 4C copper. Both sized for ampacity and voltage drop with margin.

Inputs to be Confirmed Before Ordering

- (a) Run 1 length taken as 50 m. Lengths for Runs 2a / 2b (assumed 15 m and 20 m) to be confirmed from the actual route; if either exceeds about 30 m the size shall be re-checked.

- (b) Fault level at the Ground Floor Main Panel and at the UPS input, to fix the MCCB breaking capacity (kA). 36 kA assumed pending confirmation.
- (c) The 30 kW / 10 kW figures are taken as the UPS IT load.

References

- CPWD DSR (E&M) 2025 with Correction Slip No. 1 — MCCB / MCB items (Ch. 2), cable laying (Ch. 10), gland and lug items, cable tray (Ch. 4).
- NEC India SP 30:2023, Part 1 — Annex B (cable current-carrying capacity); Clause 4.3.10 and Table 5 (voltage drop); Section 6.7 (MCB / MCCB selection).
- IS 7098 Part 1 — XLPE armoured cable; IS / IEC 61439-1 & 2 — LV switchgear assemblies.

CHECKLIST OF DOCUMENTS FOR THE TECHNICAL BID (COVER-1)

S.No.	Document	Enclosed (Yes/No)
1	Firm / company registration details and valid electrical licence (where applicable).	
2	PAN card copy.	
3	GST registration certificate copy.	
4	Proof of similar works executed — work orders and / or completion certificates.	
5	Make list offered, against each item, from the makes specified in the Schedule of Items.	
6	Signed Tender Acceptance Letter (as per format enclosed).	
7	Bidder's Details form, duly filled, signed and stamped.	
8	Un-priced copy of the Schedule of Items (Rate and Amount columns blank), signed and stamped on each page.	
9	Undertaking to confirm cable route lengths and source fault level, and to submit GA drawing, SLD, GTP, make list and CPRI type-test certificate before manufacture.	

TENDER ACCEPTANCE (OFFER) LETTER

To,

Principal, Sri Guru Gobind Singh College of Commerce
University of Delhi, Pitampura (Opposite TV Tower), Delhi – 110034

Subject: Acceptance of the terms and conditions of the RFQ for **SUPPLY, INSTALLATION, TESTING & COMMISSIONING OF UPS DISTRIBUTION PANEL AND ASSOCIATED CABLING FOR THE INSTALLED 40 kVA UPS.**

Dear Sir,

1. I / We have downloaded and read the RFQ document for the above work in its entirety, including all terms, conditions, the Schedule of Items, the Single Line Diagram, annexures and forms, and I / We accept all of them unconditionally.
2. I / We have examined the site conditions to the extent practicable and have satisfied ourselves regarding the nature and scope of the work and the local conditions affecting it.
3. I / We hereby certify that the information and documents submitted with this quotation are true and correct. In case any information is found false or incorrect at any stage, the Owner shall be at liberty to reject our quotation and to take such action as may be warranted.
4. I / We understand and accept that all taxes including GST shall be payable as applicable, that the Owner is not bound to accept the lowest or any quotation, and that the Owner may accept the whole or any part of the work or split it between Part 1 and Part 2.
5. I / We agree that payment shall be made for the actual quantity of work executed and measured at site, at the unit rates quoted by us, and that the quantities in the Schedule are provisional.

Yours faithfully,

Signature of Bidder: _____

Name: _____

Designation: _____

Stamp of the Bidder:

BIDDER'S DETAILS

S.No.	Description	Detail
1	Name of Firm / Company	
2	Address of Firm / Company	
3	PAN No.	
4	GST No.	
5	Telephone / Mobile Number	
6	Email Address	
7	Name of Proprietor / Director / Partner	
8	Address of Proprietor / Director / Partner	
9	Telephone of Proprietor / Director / Partner	

I / We hereby declare that the information furnished above is true and correct. In case the above information is found incorrect at any stage, the Principal, Sri Guru Gobind Singh College of Commerce may take appropriate action as warranted.

Name: _____

Designation: _____

Stamp & Signature: _____

Place: _____

Date: _____

CONDITIONS OF CONTRACT

The following conditions shall govern the work. Where not expressly covered, applicable CPWD practice and relevant Indian Standards shall apply.

1. Type of Contract

1. This is an item-rate contract. Payment shall be made for actual quantities executed and measured at site at the quoted unit rates, subject to certification by the Architect / Engineer-in-Charge.

2. Time of Completion

2. The work shall be completed within 10 days from the date of work order. Time is of the essence, as the work is required to regularise the existing temporary UPS supply arrangement.

3. Performance Guarantee

3. Before commencement of work the contractor shall furnish a Performance Guarantee in the form of a Bank Guarantee equal to five percent (5%) of the accepted value of the work, in the format enclosed, valid throughout the Defects Liability Period plus the claim period stated below.

4. Security Deposit / Retention

4. A retention of five percent (5%) shall be deducted from running / final payment. Fifty percent (50%) of the retention shall be released with the final bill and the balance after satisfactory completion of the Defects Liability Period, without interest.

5. Defects Liability Period

5. The Defects Liability Period shall be 12 (twelve) months from the date of completion and handing over. During this period the contractor shall rectify, at his own cost, any defect in materials, workmanship or installation. The Bank Guarantee shall remain valid through this period plus a claim period of six (6) months.

6. Taxes

6. All rates are exclusive of GST. GST shall be paid extra at the applicable rate against a proper tax invoice. All other taxes, duties and cess shall be deemed included in the rates. TDS shall be deducted as applicable, and TDS certificates issued.

7. Payment Terms

7. Running / stage payment may be made for measured work executed, certified by the Architect / Engineer-in-Charge.
8. The final bill shall be paid after completion, testing, commissioning, handing over and submission of the panel test report and the approved drawings, subject to the retention above.
9. Bills shall be computerised and supported by measurement sheets; handwritten bills shall not be accepted.

8. Measurement

10. Quantities in the Schedule are provisional. Measurement shall be taken jointly at site for the work actually executed. Payment shall be at the quoted unit rates on the basis of such measurement.

9. Quality, Approvals and Drawings

11. Before manufacture, the contractor shall submit the panel GA drawing, detailed SLD, GTP, make list and valid CPRI type-test certificate for approval. Materials shall conform to the specified makes and applicable IS / IEC, NEC India and CPWD requirements.

10. Safety

12. The contractor shall take all safety precautions, provide safety appliances to workers, and comply with the CPWD Safety Code and applicable labour laws. The contractor shall be responsible for the safety of persons and property during the work, and shall indemnify the Owner against any claim arising out of the work.

11. Variation, Extra and Substituted Items

13. The Owner may order variation in quantity at the quoted unit rates. For a genuinely new (extra) item not covered in the Schedule, the rate shall be derived from the relevant CPWD DSR (E&M) 2025 item, failing which on the basis of rate analysis supported by market rates, as approved by the Architect / Engineer-in-Charge.

12. Liquidated Damages

14. If the contractor fails to complete the work within the stipulated time or any extension granted, liquidated damages shall be levied at Rs. 1,000 (Rupees one thousand) per day of delay, subject to a maximum of ten percent (10%) of the accepted value of the work.

13. Extension of Time

15. If progress is delayed for reasons beyond the contractor's control, the contractor shall give written notice forthwith, and the Owner may grant a reasonable extension of time.

14. Insurance

16. The contractor shall, where applicable, maintain workmen's compensation cover and third-party liability cover for the duration of the work. All workers shall be covered under the Workmen's Compensation Act.

15. Coordination

17. The contractor shall coordinate with the College and with any other agency working at site, and shall carry out the work in stages so as to cause minimum disturbance to the College.

16. Termination

18. If the contractor fails to perform, neglects the work or breaches the contract and does not remedy the default within 15 (fifteen) days of written notice, the Owner may terminate the contract and get the balance work done at the contractor's risk and cost.

17. Dispute Resolution

19. In case of any dispute, the matter shall first be referred to the Owner, whose decision shall be final and binding. Failing amicable settlement, the dispute shall be referred to arbitration under the Arbitration and Conciliation Act, 1996. The place of work and jurisdiction shall be Delhi.

FORM OF PERFORMANCE SECURITY (BANK GUARANTEE) BOND

In consideration of the Principal, Sri Guru Gobind Singh College of Commerce (“Owner”) awarding the work of “Supply, Installation, Testing and Commissioning of UPS Distribution Panel and Associated Cabling for the installed 40 kVA UPS” to _____ (“Contractor”), we, _____ (Bank), at the Contractor’s request, hereby guarantee payment to the Owner as set out below.

1. We, _____ (name of the Bank), at the request of the Contractor, do hereby undertake to pay to the Owner an amount not exceeding Rs. _____ (Rupees _____ only) on demand by the Owner.
2. We do hereby undertake to pay the amounts due and payable under this guarantee without any demur, merely on a demand from the Owner stating that the amount claimed is required to meet the recoveries due or likely to be due from the Contractor. Any such demand made on the Bank shall be conclusive as regards the amount due and payable by the Bank under this guarantee. Our liability under this guarantee shall be restricted to an amount not exceeding Rs. _____ (Rupees _____ only).
3. We further undertake to pay to the Owner any money so demanded notwithstanding any dispute or disputes raised by the Contractor in any suit or proceeding pending before any court or tribunal relating thereto, our liability under this present being absolute and unequivocal.
4. This guarantee shall remain in full force and effect during the period that would be taken for the performance of the said agreement and shall continue to be enforceable till all the dues of the Owner under the said agreement have been fully paid and its claims satisfied or discharged, or till the Engineer-in-Charge on behalf of the Owner certifies that the terms and conditions of the said agreement have been fully and properly carried out by the Contractor.
5. The Owner shall have the fullest liberty, without our consent and without affecting in any manner our obligations hereunder, to vary any of the terms and conditions of the said agreement or to extend the time of performance by the Contractor, and we shall not be relieved from our liability by reason of any such variation or extension.
6. This guarantee shall not be discharged due to any change in the constitution of the Bank or of the Contractor.
7. This guarantee shall be valid up to _____, unless extended on demand by the Owner. Notwithstanding anything stated above, our liability under this guarantee is restricted to Rs. _____ (Rupees _____ only), and unless a claim in writing is lodged with us within six months of the date of expiry or the extended date of expiry of this guarantee, all our liabilities under this guarantee shall stand discharged.

Dated the _____ day of _____, 20____.

For _____ (Bank)

Authorised Signatory — Name, Designation, Seal

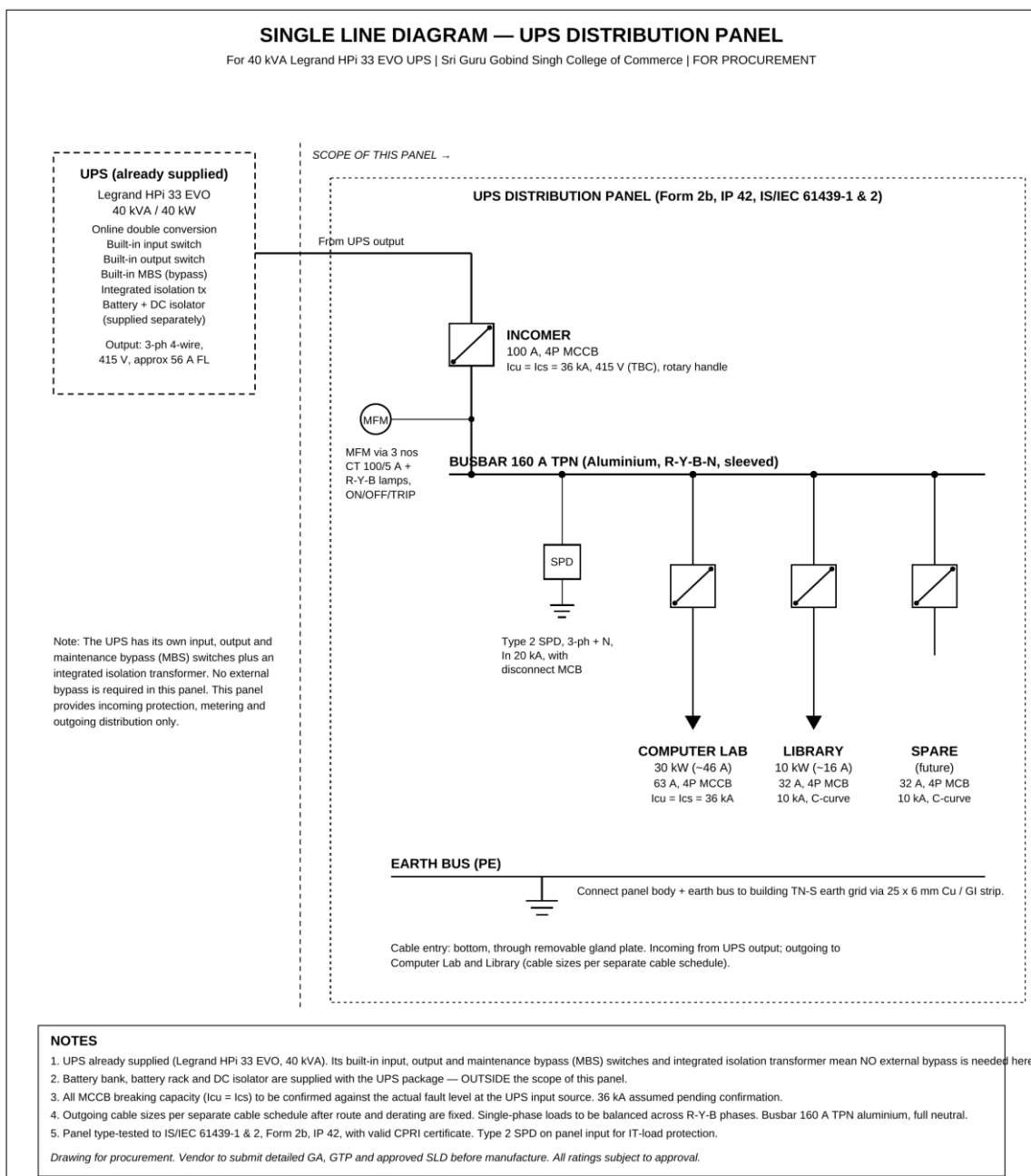
CONTRACT DRAWINGS

The following drawing forms part of this RFQ and shall be read together with the Schedule of Items:

Sheet	Title	Status
SLD-01	Single Line Diagram — UPS Distribution Panel for the 40 kVA Legrand HPI 33 EVO UPS (For Procurement).	For procurement; indicative.

IMPORTANT NOTICE TO ALL BIDDERS

The Single Line Diagram is indicative and issued for procurement. Before manufacture, the successful bidder shall take site measurements and submit the panel GA drawing, detailed SLD, GTP, make list and valid CPRI type-test certificate for approval. The assumed MCCB breaking capacity of 36 kA and the prospective source fault level shall be verified before manufacture. All ratings are subject to approval.



Drawing SLD-01 — Single Line Diagram, UPS Distribution Panel for the 40 kVA Legrand HPi 33 EVO UPS (for procurement; indicative).